

U. S. COAST AND GEODETIC SURVEY.

A. M. Thorn, Superintendent.

State: *Wash. Ter.*

DESCRIPTIVE REPORT.

Topographic Sheet No. 1796.

LOCALITY:

*Rosario Strait;
Samish Flats to
Bellingham.*

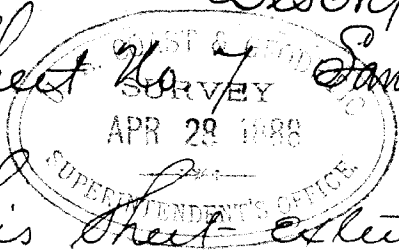
1887.

CHIEF OF PARTY:

J. J. Gilbert.

Descriptive Report

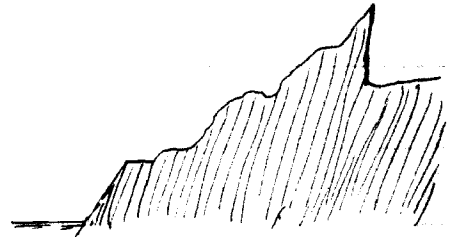
Sheet No. 7 Spanish Flats to Bellingham W. F.



This sheet extends from near the flats in Spanish Bay, to the Town of Bellingham, three miles from the Head of Bellingham Bay.

Except from Statius Spring to Fairhaven Bay, and a small bay South of Spring, and also a part of the Head of Chuckanut Bay, just about the Creek, the entire shore-line is Sandstone. Generally it is coarse grained, and soft, and has been cut into an infinite variety of fantastic shapes by the action of wind and wave. Sketch No. 1. Represents one common appearance; - it is of two boulders near Statius Sandstone. In Chuckanut Bay the Sandstone is of finer quality, and is extensively quarried for building purposes. - The Portland Custom House; - The foundation of the Custom House at Port Townsend, and the foundations and trimmings of many buildings at Seattle came from the Chuckanut Quarry. The strata at Chuckanut Quarry are tipped up very steep. - dip being about 60° - facing to Westward, - the strike being nearly North and South.

A Section of Chuckanut Hill,
East and West through the
Quarry, would be made like this—



Rising rapidly from the water, within about half a mile, an altitude of more than 1300 ft. is reached, when it drops sheer, from 100 to 200 feet. This sharp ridge, extends the entire length of Chuckanut Bay, in nearly a straight line, + apparently continues through to Oyster Creek. Sandstone ledges crop out all over Chuckanut hills. Near the North end of the ridge there is little soil, and only a small growth of scrub fir and underbrush.

Over the balance of the sheet, except in places where the ledges protrude, there is a dense growth of fir and underbrush.

Sketch No. 2 represents Chuckanut Mountain from the N.W.:- the heavy shading near center is the N. End of the remarkable ridge described above.

Further up the Bay the perpendicular Cliff is conspicuous.

Sketch No. 3 represents the Shore-line $3/4$ mile South from Δ Sandstone, where it appears like a succession of buttresses. Sandstone Signal is on the detached rock at left of sketch.

Sketch No 4. is an excellent representation of the view from Point Frances, on a clear day, with Mt. Baker in the distance; Chuckanut Hill, or rather the North end of the Chuckanut ridge is seen in the foreground, at the right, - and the low plateau extending from Whatcom to N. & W. at the left.

At Fairhaven is the outlet of a small creek which drains a rich agricultural region. - One mile from Fairhaven is what is known as Happy Valley, an original prairie, now occupied by several farms. - One mile or more beyond Happy Valley is Padden Lake, without outlet in summer, but overflowing through the creek during winter.

The soil in this valley is productive, growing all cereals and roots in profusion, and apples, peaches, plums, and small fruits.

The town of Bellingham was laid out in 1884 when the Bellingham Mill was built, and a large number of lots were sold to the workmen and others. Some eighty buildings were erected in Bellingham and Fairhaven, which is really a part of the same settlement though owned by different parties originally, and laid out as a different town-site.

The mill was shut down within a year or two and

both Bellingham and Fairhaven are now deserted, there being some six or eight families left.

Bellingham was laid out by Mr. Edward Eldridge, and Fairhaven by Mr. Daniel Harris, - both in 1884.

There is an abundance of running water, three or four small leaping streams along the shore south of Δ Sandstone; three considerable creeks and two or three small streams empty into Chuckanut Bay.

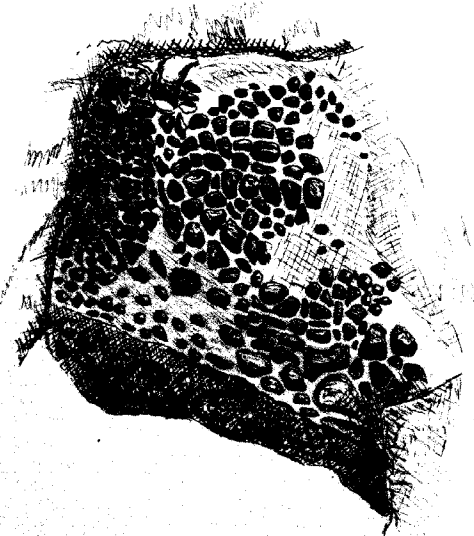
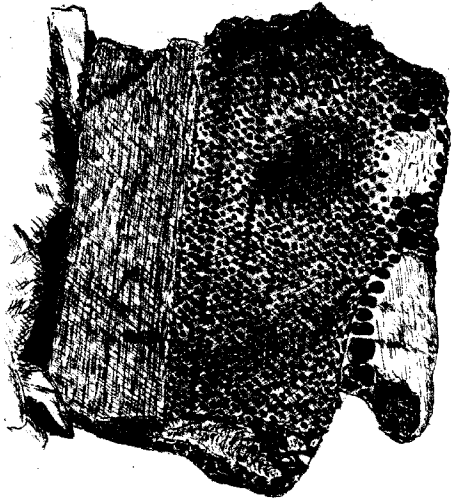
Northward of Chuckanut there are none that live through the summer, though that at Fairhaven is a good stream in winter.

There is good anchorage & protection in the South part of Chuckanut Bay; - the North end of the Bay is shallow.

Fairhaven bay is one of the snugest harbors on all these waters, being exposed only to North winds, which seldom blow.

Except the Valley mentioned above, there is little land represented on this sheet, that is suitable for cultivation. There are traces of coal in several places, but it is of poor quality.

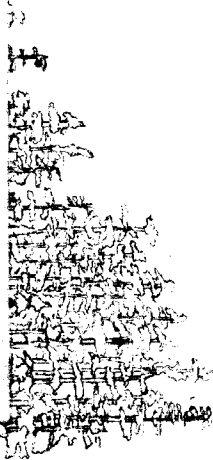
J. J. Gilbert
Assist. Geol. Survey

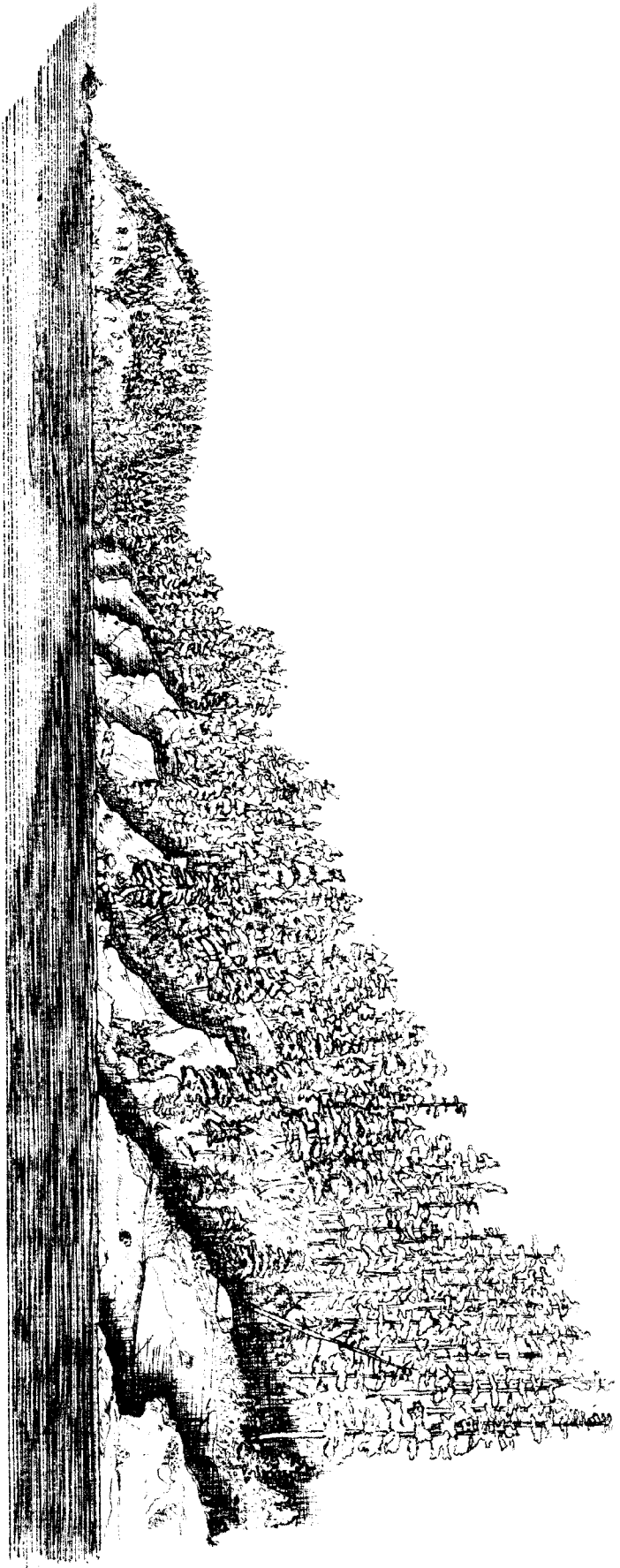


HONEY-COMBED ROCK.
NEAR CHUCKANUT BAY.

Sketch 7, No. 1

Sketch 7, No. 1





SERIES OF SANDSTONE BUTTRESSES.
1/2 Mile South of Casco Bay Harbor

Sketch J. W. M.

8/



CHUCKANUT MOUNTAIN
OCEANOGRAPHIC SURVEY

from Fort Greene, Alaska

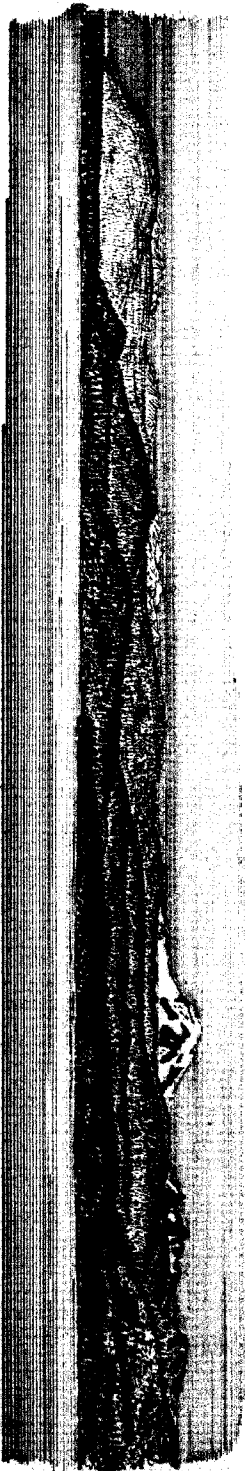
CHUCKANUT RAY

CHUCKANUT MOUNTAIN AND RAY

Alaska

Sheet 7, 1902

7



WATSON SCENE BELLINGHAM
OUTLOOK TO THE EAST FROM PT FRANCIS
MT BAKER

Sketch No. 4

CHUCKANUC BAY

CHUCKANUC MOUNTAIN AND BAY

Mount Eliza Island



CHUCKANUT BAY

CHUCKANUT MOUNTAIN AND BAY

Wm. C. C. Palmer